



Economic Impact of Nonprofit Organizations
Hillsborough and Pinellas counties

Completed by
Nonprofit Leadership Center of Tampa Bay
1401 N. Westshore Blvd., Suite 101 | Tampa, FL 33607 | (813) 287-8779
info@nonprofitleadershipcenter.com | www.nonprofitleadershipcenter.com

Table of Contents

1 | Executive Summary.....3

2 | Introduction.....4

3 | Impact Summary.....5

 3.1 | Employment Summary-Employment by Category for Hillsborough County.....5

 3.2 | Organizations by Revenue and their Assets in Hillsborough County.....7

 3.3 | Employment Summary-Employment by Category for Pinellas County.....8

 3.4 | Organizations by Revenue and their Assets in Pinellas County.....10

 3.5 | Average Year Founded by Category.....11

4 | Data Appendix.....12

 4.1 | Hillsborough County: Top 100 Nonprofit Organizations by Revenue.....12

 4.2 | Hillsborough County: Assets of Top 100 Nonprofit Organizations by Revenue.....14

 4.3 | Hillsborough County: Employment of Top 100 Nonprofit Organizations by Revenue.....16

 4.4 | Pinellas County: Top 100 Nonprofit Organizations by Revenue.....18

 4.5 | Pinellas County: Assets of Top 100 Nonprofit Organizations by Revenue.....20

 4.6 | Pinellas County: Employment of Top 100 Nonprofit Organizations by Revenue.....22

1 | Executive Summary

Often, when those of us who work in the nonprofit sector are asked where we work or what we do for a living, the response we get is "oh, that's nice." This study of the economic impact of the nonprofit sector in Hillsborough and Pinellas counties demonstrates that it is more than just nice. The nonprofit sector is a significant factor in the economic viability of these two counties with likely impact in the surrounding counties as well.

There are 3,694 nonprofit organizations in Hillsborough and Pinellas Counties. That is equivalent to saying that there are 3,694 *businesses* in these two counties who happen to be nonprofit organizations. Some of these businesses are large, some are small, and some are midsized as is shown in this report.

In order to keep the report manageable we chose to focus on the top 100 nonprofits (public charities only) by revenue. What should be emphasized is that in addition to the top 100, there are 3,594 additional nonprofits with assets, revenue, and employees on whom we did not focus but who, collectively, contribute significantly to the economic viability of our area.

The top 100 nonprofit organizations by revenue alone have 86,057 employees in the workforce in Hillsborough and Pinellas counties. This represents 9.3% of the total workforce in these counties. Exact data is not available for the total workforce represented by all 3,694 nonprofits, but one can extrapolate that if 3% of all nonprofits in the counties represent 9.3% of the total workforce, then the remaining nonprofits are likely to account for a percentage significantly over the 9.3% that the top 100 nonprofits represent.

The purpose of this report was to document the fact that nonprofits are businesses that employ people, who buy things from other businesses in the community, and whose employees also spend the money they earn to buy things. Nonprofits are an economic force in the economy of Hillsborough and Pinellas counties.

2 | Introduction

The Nonprofit Leadership Center of Tampa Bay has conducted a study to measure the influence the nonprofit sector has in Hillsborough and Pinellas counties.

The Nonprofit Leadership Center focused on the following criteria in each county:

- The top 100 nonprofits by revenue and their assets
- Attempting to recognize employment information in the top 100 nonprofits by revenue
- Categorizing the top 100 nonprofits by revenue

Active Organizations and Combined Revenue

As of August 2011, 2,020 organizations in Hillsborough filed Form 990s with the IRS reporting \$4,606,232,338 in revenue.

As of August 2011, 1,674 organizations in Pinellas County filed Form 990s with the IRS reporting \$4,519,171,220 in revenue.

Employment Information

Employment information in this report is based on the top 100 nonprofits in each county by revenue.

As of August 2011, the top 100 nonprofits in Hillsborough County employed approximately 41,047 individuals, which represents 7.71% of the overall labor force in the county.

As of August 2011, the top 100 nonprofits in Pinellas County employed approximately 45,010 individuals, which represents 11.47% of the overall labor force in the county.

Search Criteria

The top 100 nonprofit organizations by revenue for Hillsborough and Pinellas counties were determined based on a search conducted through the National Center for Charitable Statistics (NCCS). The search was conducted for each county by total revenue. The search was limited to public charities who are current 990 filers. (Public charities do not include organizations such as nonprofit membership organizations and credit unions.)

3 | Impact Summary

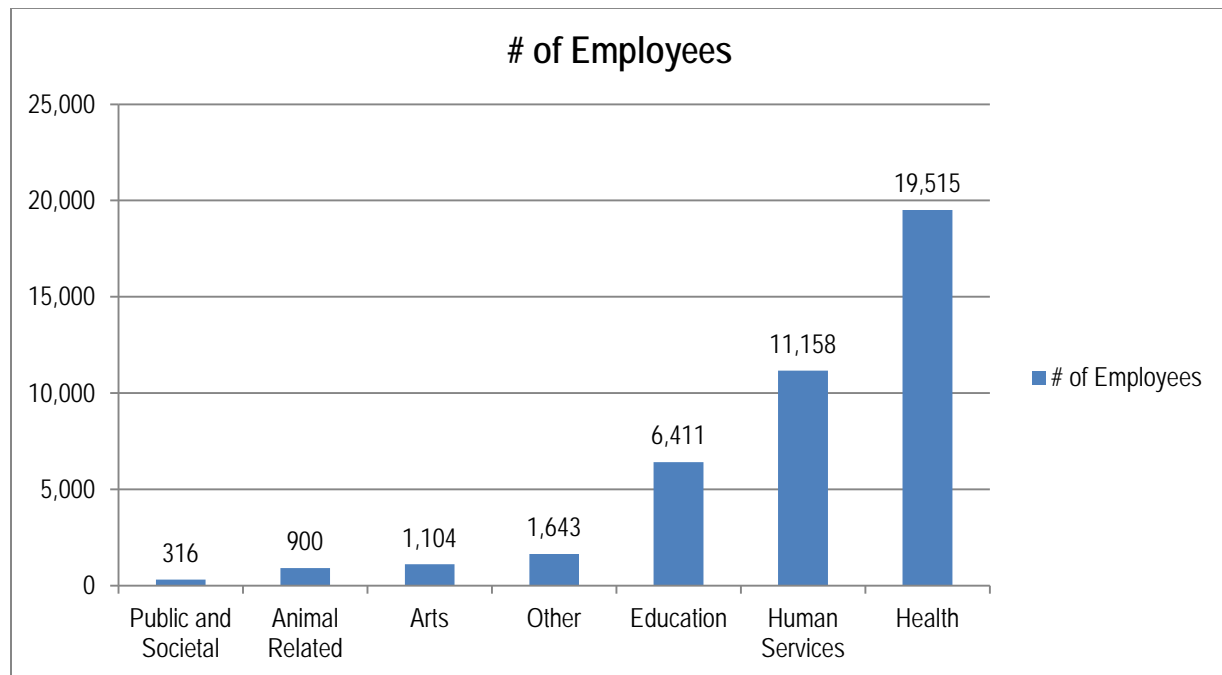
3.1 | Employment Summary | Employment by Category of Top 100 Nonprofits by Revenue for Hillsborough County

Employment Impact of Top 100 Nonprofit Organizations (NPOs) by Revenue

Category	# of Orgs.	# of Employees	% of County Workforce
Public and Societal	8	316	0.06%
Animal Related	3	900	0.17%
Arts	3	1,104	0.21%
Other	8	1,643	0.31%
Education	22	6,411	1.20%
Human Services	34	11,158	2.10%
Health	22	19,515	3.66%
Total	100	41,047	7.71%

Hillsborough County Employed Workforce= 532,520

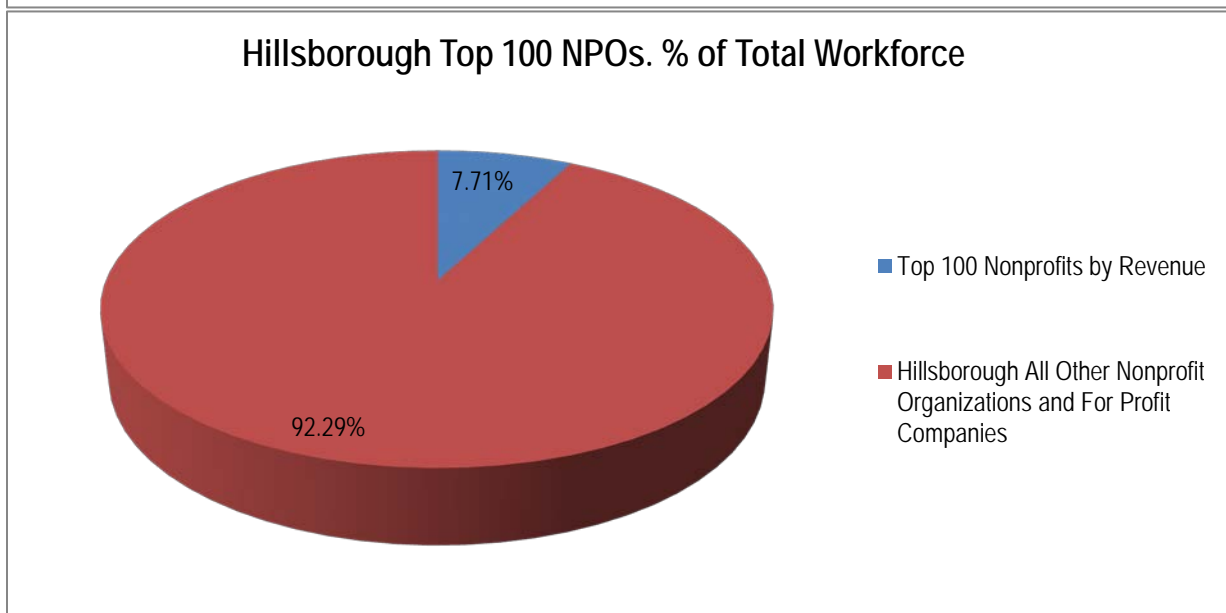
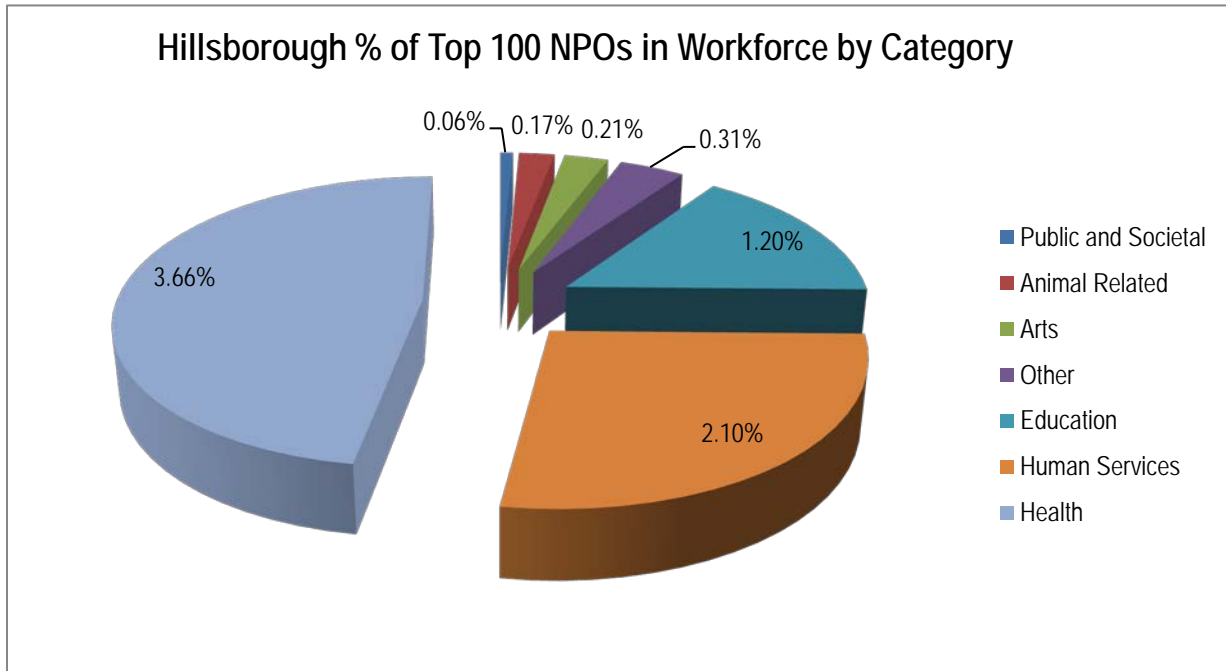
Note: For more information on category listings and specification visit nccsdatatweb.urban.org



Hillsborough County 07/11

Source: IRS Business Master Files (Exempt Organizations) 07/2011. <http://nccsdatatweb.urban.org> (2011). IRS Form 990's provided by the Foundation Center

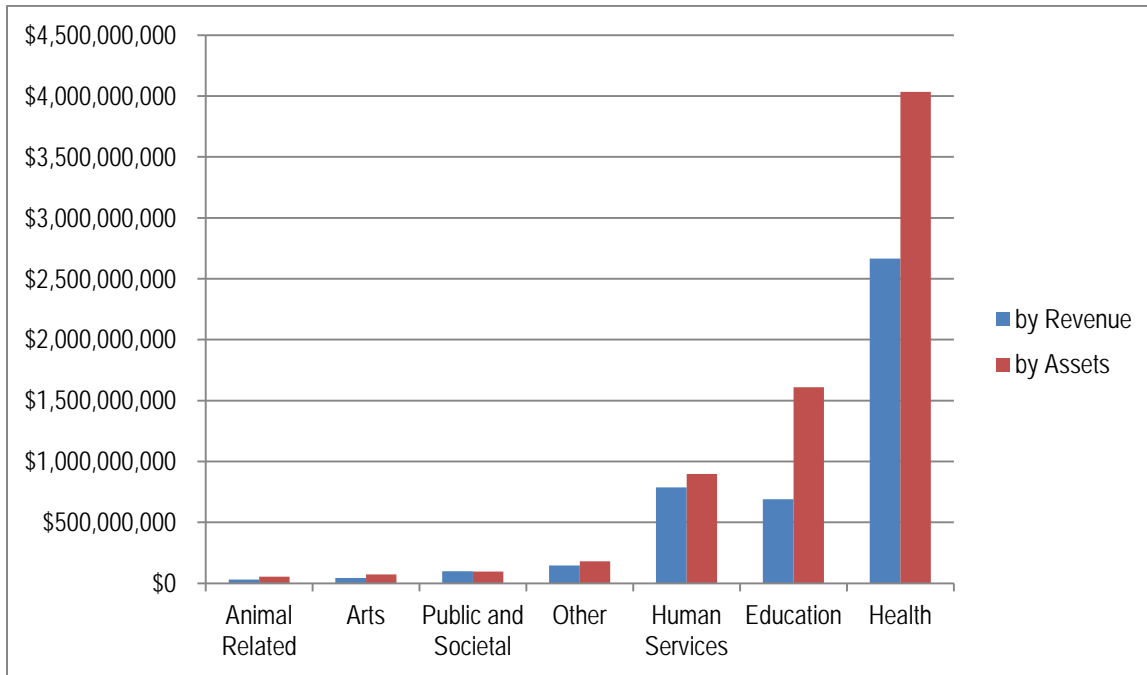
3.1 | Employment Summary | Employment by Category of Top 100 Nonprofits by Revenue for Hillsborough County



Nonprofits Impact on Hillsborough Workforce		
Top 100 Nonprofits by Revenue	41,047	7.71%
Hillsborough All Other Nonprofit Organizations and For Profit Companies	491,473	92.29%
Hillsborough County Employed Workforce	532,520	100.00%

Source: State of Florida, Agency for Workforce Innovation- Local Area Unemployment Statistics – July 2011 Hillsborough County 07/11
 Source: IRS Business Master Files (Exempt Organizations) 07/2011. <http://nccsdataweb.urban.org> (2011). IRS Form 990's provided by the Foundation Center

3.2 | Organizations by Revenue and their Assets in Hillsborough County



Category	# of Orgs.	Revenue	Assets
Animal Related	3	\$ 31,452,749	\$ 53,092,887
Arts	3	\$ 43,048,749	\$ 73,673,427
Public and Societal	8	\$ 98,368,507	\$ 96,284,588
Other	8	\$ 145,896,956	\$ 179,854,309
Human Services	34	\$ 786,593,461	\$ 896,154,949
Education	22	\$ 690,645,291	\$ 1,608,583,056
Health	22	\$ 2,665,836,514	\$ 4,034,692,736
Total	100	\$ 4,461,842,227	\$ 6,942,335,952

Hillsborough County 07/11

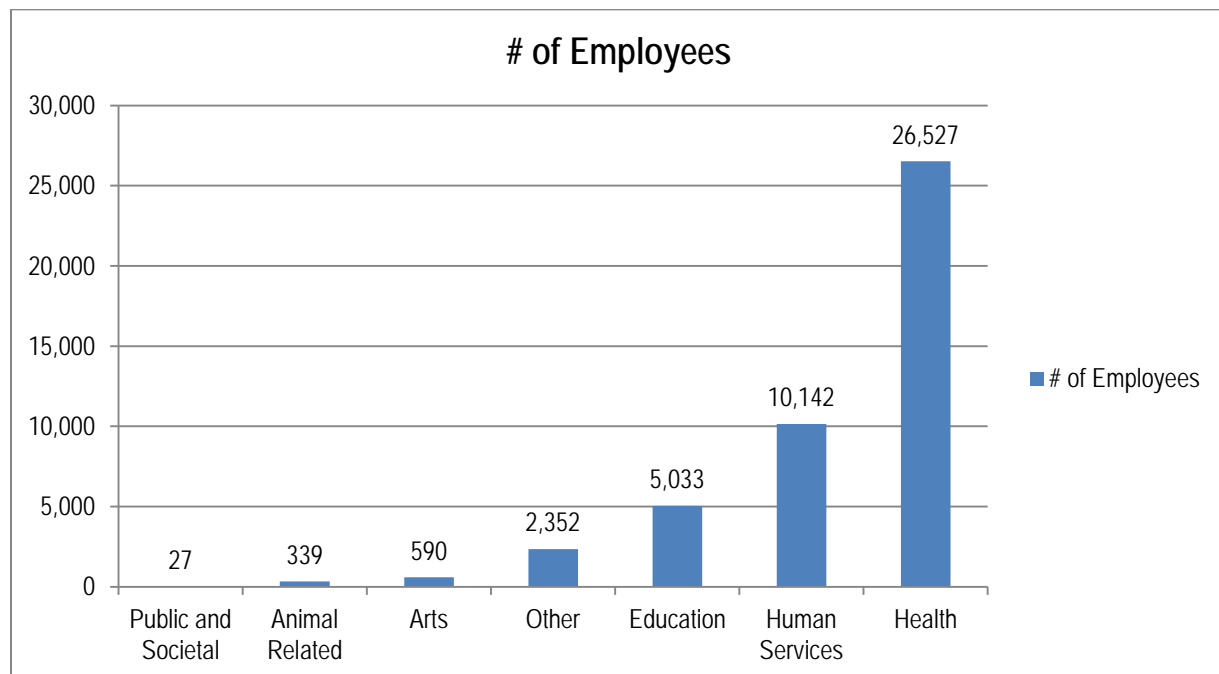
Source: IRS Business Master Files (Exempt Organizations) 07/2011. <http://nccsdataweb.urban.org> (2011). IRS Form 990's provided by the Foundation Center

3.3 | Employment Summary | Employment by Category of Top 100 Nonprofits by Revenue for Pinellas County

Employment Impact of Top 100 Nonprofit Organizations (NPOs) by Revenue

Category	# of Orgs.	# of Employees	% of County Workforce
Public and Societal	1	27	0.01%
Animal Related	3	339	0.09%
Arts	4	590	0.15%
Other	8	2,352	0.60%
Education	15	5,033	1.28%
Human Services	36	10,142	2.59%
Health	33	26,527	6.76%
Total	100	45,010	11.47%

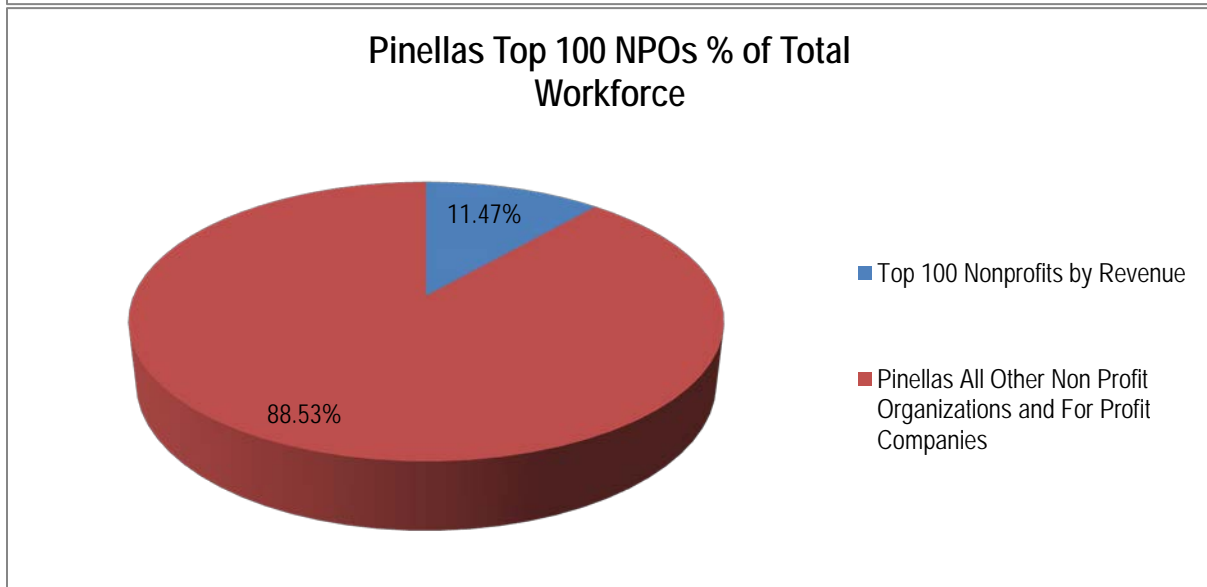
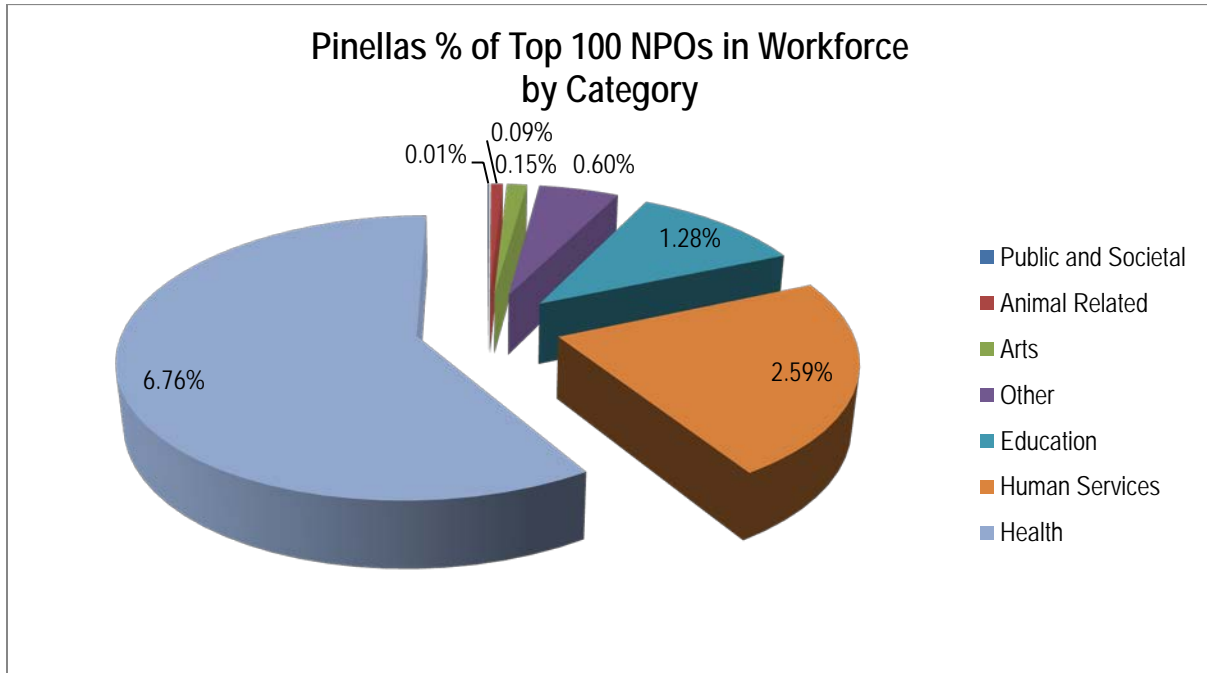
Pinellas County Employed Workforce= 392,280



Pinellas County 07/11

Source: IRS Business Master Files (Exempt Organizations) 07/2011. <http://nccsdataweb.urban.org> (2011). IRS Form 990's provided by the Foundation Center

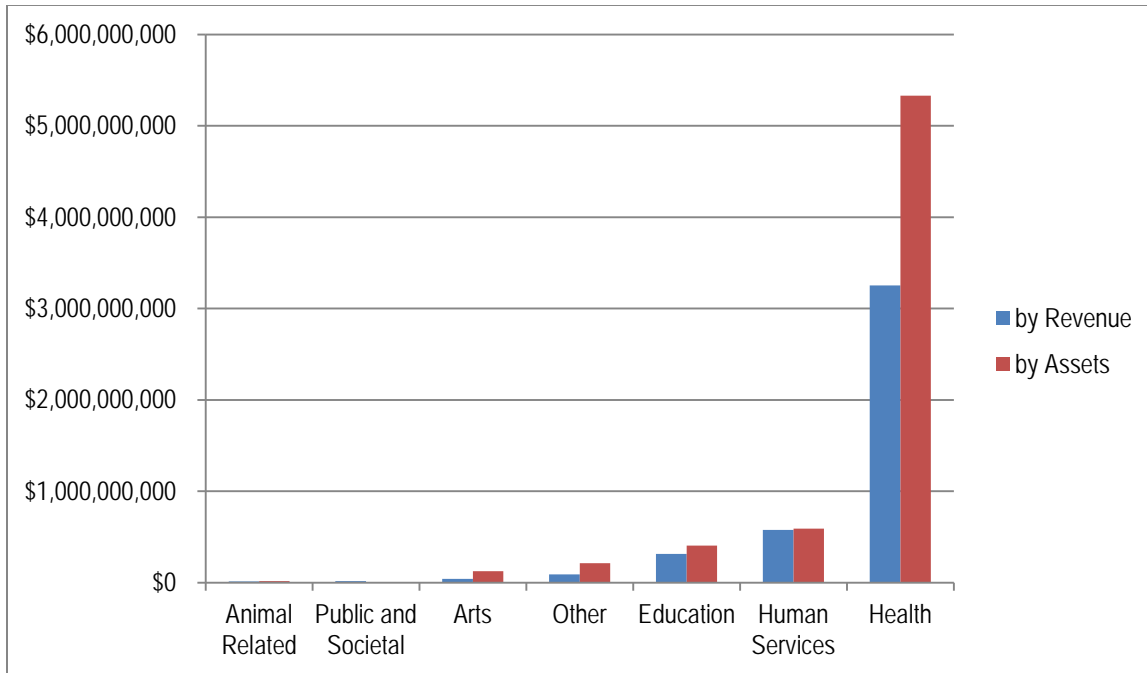
3.3 | Employment Summary | Employment by Category of Top 100 Nonprofits by Revenue for Pinellas County



Nonprofits Impact on Pinellas Workforce		
Top 100 Nonprofits by Revenue	45,010	11.47%
Pinellas All Other Non Profit Organizations and For Profit Companies	347,270	88.53%
Pinellas County Employed Workforce	392,280	100.00%

Source: State of Florida, Agency for Workforce Innovation- Local Area Unemployment Statistics – July 2011 Pinellas County 07/11
 Source: IRS Business Master Files (Exempt Organizations) 07/2011. <http://nccsdataweb.urban.org> (2011). IRS Form 990's provided by the Foundation Center

3.4 | Organizations by Revenue and their Assets in Pinellas County



Category	# of Orgs.	Revenue	Assets
Animal Related	3	\$ 11,820,407	\$ 16,366,879
Public and Societal	1	\$ 16,664,637	\$ 483,338
Arts	4	\$ 40,088,472	\$ 124,294,667
Other	8	\$ 89,081,703	\$ 212,822,823
Education	15	\$ 313,248,834	\$ 404,730,484
Human Services	36	\$ 575,478,177	\$ 591,240,078
Health	33	\$ 3,253,256,424	\$ 5,329,523,330
Total	100	\$ 4,299,638,654	\$ 6,679,461,599

Pinellas County 07/11

Source: IRS Business Master Files (Exempt Organizations) 07/2011. <http://nccsdataweb.urban.org> (2011). IRS Form 990's provided by the Foundation Center

3.5 | Average Year Founded by Category Based on Top 100 Nonprofits by Revenue

Hillsborough County

Category	Average Date Founded
Public and Societal	1990
Animal Related	1981
Arts	1983
Other	1978
Education	1986
Human Services	1984
Health	1980
Average	1983

Pinellas County

Category	Average Date Founded
Public and Societal	1969
Animal Related	1984
Arts	1973
Other	1982
Education	1982
Human Services	1981
Health	1983
Average	1979

Hillsborough County and Pinellas County 07/11

Source: IRS Business Master Files (Exempt Organizations) 07/2011. <http://nccsdataweb.urban.org> (2011). IRS Form 990's provided by the Foundation Center

4 | Data Appendix

4.1 | Hillsborough County: Top 100 Nonprofit Organizations by Revenue

#	Category	Name	Total Revenue
1	Health	Florida Health Sciences Center Inc	\$949,260,333
2	Health	H Lee Moffitt Cancer Center and Research Institute Hospital Inc	\$528,443,222
3	Health	University Community Hospital Inc	\$441,404,405
4	Health	University Medical Service Association Inc	\$177,281,982
5	Education	University of Tampa	\$163,954,879
6	Human Services	Senior Care Group Inc	\$106,872,084
7	Health	H Lee Moffitt Cancer Center and Res Earch Institute Inc	\$98,388,013
8	Health	South Florida Baptist Hospital Inc	\$94,175,318
9	Education	Florida School Choice Fund Inc	\$92,096,865
10	Human Services	Ncf Charitable Trust	\$91,408,456
11	Human Services	Lifepath Hospice Inc	\$82,065,533
12	Education	Hillsborough County School Readiness Coalition Inc	\$75,571,875
13	Other	Lifelink Foundation Inc	\$73,202,450
14	Education	Amikids Inc Group Return	\$69,731,734
15	Human Services	Hillsborough Kids Inc	\$67,200,479
16	Health	H Lee Moffitt Cancer Ctr & Res Inst Life Time Cancer Scrn Ctr Inc	\$61,013,885
17	Education	University of South Florida Foundation Inc Sam & Martha Gibbons Alumni Center	\$60,962,905
18	Education	University of South Florida Medical Services Support Corporation	\$59,157,929
19	Health	American Cancer Society Inc Florida Division Inc	\$54,650,024
20	Human Services	Good Shepherd Hospice Inc	\$49,394,713
21	Education	Usf Financing Corporation	\$43,492,559
22	Human Services	Chapters Health System Inc	\$42,724,889
23	Health	Central Florida Behavioral Health Network Inc	\$39,408,813
24	Health	The Shriners Hospital for Children	\$35,376,391
25	Human Services	Lutheran Services Florida Inc Karolia J Reagan	\$33,421,935
26	Human Services	Tampa Metropolitan Area YMCA Inc	\$32,741,757
27	Health	Mental Health Care Inc	\$30,281,113
28	Arts	Tampa Bay Performing Arts Center	\$30,106,476
29	Human Services	John Knox Village of Tampa Bay Inc	\$28,781,275
30	Other	Love A Child Inc	\$28,052,482
31	Education	University of South Florida Research Foundation Inc	\$26,506,125
32	Human Services	Florida Living Options Inc	\$26,478,090
33	Health	Suncoast Community Health Centers Inc	\$24,972,254
34	Public and Societal	Tampa Bay Workforce Alliance Inc	\$23,547,858
35	Public and Societal	United Way of Tampa Bay Inc	\$21,635,113
36	Human Services	St Josephs Enterprises Inc	\$20,922,730
37	Human Services	Feeding America Tampa Bay Inc	\$19,953,934
38	Human Services	Tampa Family Health Centers Inc	\$19,819,950
39	Human Services	Community Foundation of Tampa Bay Inc	\$18,088,660
40	Health	Usf Health Professions Conferencing Corporation	\$17,260,649
41	Human Services	West Central Florida Area Agency on Aging Inc	\$16,890,543
42	Health	Jaeb Center for Health Research Inc	\$16,223,647
43	Human Services	Agency for Community Treatment Services Inc	\$15,492,715
44	Animal Related	Lowry Park Zoological Society of Tampa Inc	\$14,763,116
45	Health	H Lee Moffitt Cancer Center and Research Institute Foundation Inc	\$14,602,928
46	Health	Northside Mental Health Center Inc	\$14,555,715
47	Health	Drug Abuse Comprehensive Coordinating Office Inc	\$14,314,063
48	Health	Childrens Home Inc	\$13,741,228

49	Human Services	Metropolitan Ministries Inc	\$13,621,932
50	Education	Aacsb International the Association To Advance Collegiate Schools of	\$13,478,078
51	Health	Lifelink Healthcare Institute Inc	\$13,258,873
52	Public and Societal	Special Operations Warrior Foundation	\$13,002,525
53	Animal Related	Florida Aquarium Inc	\$12,777,624
54	Education	Florida College	\$12,698,089
55	Education	Tampa Preparatory School Inc	\$11,806,402
56	Health	Healthy Start Coalition of Hillsborough County Inc	\$10,394,567
57	Health	St Josephs Health Care Center Inc	\$9,773,755
58	Other	Tampa Bay Bowl Association Inc	\$9,629,860
59	Public and Societal	University Area Community Development Corporation Inc	\$9,436,433
60	Education	Carrollwood Day School Education Inc	\$9,421,851
61	Public and Societal	Tampa Jcc-Federation Inc	\$9,252,102
62	Human Services	Insurance Institute for Business & Home Safety Ibhs	\$9,007,740
63	Human Services	The Crisis Center of Tampa Bay Inc	\$8,996,535
64	Other	Florida West Coast Public Broadcasting Inc	\$8,685,576
65	Public and Societal	Bay Area Legal Services Inc	\$8,398,124
66	Human Services	Canterbury Towers Inc	\$8,327,675
67	Human Services	Cornerstone Family Ministries Inc	\$8,320,589
68	Other	Central Florida Lions Eye and Tissue Bank Inc	\$8,223,913
69	Arts	Museum of Science and Industry Inc	\$8,092,231
70	Public and Societal	Outback Steakhouse Pro-Am Foundation Inc	\$8,083,652
71	Education	Independent Day School of Tampa Inc	\$7,628,386
72	Other	Florida Strawberry Festival Inc	\$7,296,903
73	Health	Franciscan Properties Inc	\$7,055,336
74	Human Services	Tampa Bay Harvest Inc	\$6,869,988
75	Human Services	Girl Scouts of West Central Florida Inc	\$6,585,668
76	Education	American College of Physician Executives Inc	\$6,553,707
77	Education	The Pepin Academies Inc	\$6,408,081
78	Other	Watoto Child Care Ministry Inc	\$6,166,420
79	Human Services	Macdonald Training Center Inc	\$5,923,278
80	Human Services	Boys and Girls Clubs of Tampa Bay Inc	\$5,781,417
81	Human Services	Hillsborough Association for Retarded Citizens Inc	\$5,739,171
82	Human Services	Human Development Center Inc	\$5,393,550
83	Public and Societal	Tampa Historic Streetcar Inc	\$5,012,700
84	Education	Tampa School Development Corporation	\$4,931,185
85	Human Services	Phoenix Programs of Florida Inc	\$4,896,274
86	Arts	Tampa Bay History Center Inc	\$4,850,042
87	Education	Hillsborough Education Foundation Inc	\$4,766,758
88	Education	Hillsborough Community College Foundation Inc	\$4,653,109
89	Other	Sun Dome Inc	\$4,639,352
90	Education	Back To Basics Charter School Foundation Inc Terrace Community School	\$4,637,103
91	Human Services	Tampa-Orlando-Pinellas Jewish Foundation Inc Attn Bruce Shanker	\$4,496,224
92	Human Services	The Centre for Women Inc	\$4,388,123
93	Human Services	Success 4 Kids & Families	\$4,190,797
94	Education	Charter School of Tampa Bay Academy Inc	\$4,147,443
95	Education	Learning Gate Community School	\$4,126,088
96	Human Services	The Spring of Tampa Bay Inc	\$4,033,688
97	Human Services	Genesis Financial Management Inc	\$3,946,666
98	Education	Advantage Academy of Hillsborough Inc	\$3,914,140
99	Animal Related	Humane Society of Tampa Inc	\$3,912,009
100	Human Services	United Cerebral Palsy of Tampa Bay Inc	\$3,816,403

4.2 | Hillsborough County: Assets of Top 100 Nonprofit Organizations by Revenue

#	Category	Name	Total Assets
1	Health	Florida Health Sciences Center Inc	\$1,062,270,935
2	Health	The Shriners Hospital for Children	\$789,665,666
3	Health	St Josephs Health Care Center Inc	\$582,788,828
4	Education	University of South Florida Foundation Inc Sam & Martha Gibbons Alumni Center	\$461,704,946
5	Health	University Community Hospital Inc	\$444,939,368
6	Education	Usf Financing Corporation	\$363,244,572
7	Health	H Lee Moffitt Cancer Center and Research Institute Hospital Inc	\$325,027,437
8	Education	University of Tampa	\$313,309,884
9	Health	H Lee Moffitt Cancer Center and Res Earch Institute Inc	\$286,521,048
10	Human Services	Ncf Charitable Trust	\$183,548,780
11	Human Services	Chapters Health System Inc	\$135,181,495
12	Human Services	Community Foundation of Tampa Bay Inc	\$130,088,860
13	Other	Lifelink Foundation Inc	\$108,171,688
14	Health	South Florida Baptist Hospital Inc	\$107,092,141
15	Education	University of South Florida Research Foundation Inc	\$90,188,164
16	Health	H Lee Moffitt Cancer Center and Research Institute Foundation Inc	\$83,058,488
17	Health	American Cancer Society Inc Florida Division Inc	\$82,511,052
18	Health	University Medical Service Association Inc	\$80,469,843
19	Education	University of South Florida Medical Services Support Corporation	\$79,590,596
20	Human Services	Senior Care Group Inc	\$77,950,743
21	Health	Franciscan Properties Inc	\$76,450,188
22	Human Services	Tampa Metropolitan Area YMCA Inc	\$54,550,503
23	Human Services	Insurance Institute for Business & Home Safety Ibhs	\$48,915,518
24	Education	Florida School Choice Fund Inc	\$46,758,351
25	Animal Related	Lowry Park Zoological Society of Tampa Inc	\$44,415,415
26	Education	Florida College	\$44,215,295
27	Public and Societal	Special Operations Warrior Foundation	\$42,515,635
28	Arts	Tampa Bay History Center Inc	\$40,732,125
29	Human Services	John Knox Village of Tampa Bay Inc	\$39,818,160
30	Education	Amikids Inc Group Return	\$38,061,838
31	Human Services	Tampa-Orlando-Pinellas Jewish Foundation Inc Attn Bruce Shanker	\$32,505,655
32	Education	Tampa Preparatory School Inc	\$30,734,998
33	Health	Drug Abuse Comprehensive Coordinating Office Inc	\$27,340,461
34	Arts	Tampa Bay Performing Arts Center	\$25,255,840
35	Human Services	Tampa Family Health Centers Inc	\$24,450,673
36	Education	Hillsborough Community College Foundation Inc	\$23,443,625
37	Public and Societal	United Way of Tampa Bay Inc	\$21,623,475
38	Education	Carrollwood Day School Education Inc	\$20,003,122
39	Education	Hillsborough Education Foundation Inc	\$19,574,614
40	Other	Florida Strawberry Festival Inc	\$19,048,387
41	Education	Aacsb International the Association To Advance Collegiate Schools of	\$18,915,731
42	Human Services	St Josephs Enterprises Inc	\$18,385,734
43	Other	Central Florida Lions Eye and Tissue Bank Inc	\$17,352,553
44	Human Services	Canterbury Towers Inc	\$17,062,124
45	Education	Independent Day School of Tampa Inc	\$16,535,654
46	Health	Mental Health Care Inc	\$16,521,781
47	Other	Florida West Coast Public Broadcasting Inc	\$16,407,457
48	Health	Suncoast Community Health Centers Inc	\$12,942,906
49	Human Services	Metropolitan Ministries Inc	\$12,446,148

50	Human Services	Boys and Girls Clubs of Tampa Bay Inc	\$12,103,984
51	Health	Usf Health Professions Conferencing Corporation	\$11,417,406
52	Human Services	Agency for Community Treatment Services Inc	\$11,328,905
53	Human Services	Lifepath Hospice Inc	\$11,239,932
54	Public and Societal	Tampa Jcc-Federation Inc	\$11,215,878
55	Human Services	Lutheran Services Florida Inc Karolia J Reagan	\$11,177,896
56	Health	Jaeb Center for Health Research Inc	\$11,169,849
57	Human Services	Hillsborough Kids Inc	\$10,503,271
58	Health	Childrens Home Inc	\$9,591,418
59	Other	Tampa Bay Bowl Association Inc	\$9,528,864
60	Human Services	Girl Scouts of West Central Florida Inc	\$8,957,643
61	Public and Societal	University Area Community Development Corporation Inc	\$8,364,061
62	Human Services	Hillsborough Association for Retarded Citizens Inc	\$8,308,403
63	Human Services	Good Shepherd Hospice Inc	\$8,298,417
64	Education	Learning Gate Community School	\$8,214,034
65	Health	Northside Mental Health Center Inc	\$7,710,035
66	Arts	Museum of Science and Industry Inc	\$7,685,462
67	Education	Back To Basics Charter School Foundation Inc Terrace Community School	\$7,669,806
68	Education	Tampa School Development Corporation	\$7,499,589
69	Health	H Lee Moffitt Cancer Ctr & Res Inst Life Time Cancer Scrn Ctr Inc	\$7,457,646
70	Human Services	Florida Living Options Inc	\$7,080,488
71	Education	The Pepin Academies Inc	\$6,441,442
72	Human Services	The Crisis Center of Tampa Bay Inc	\$6,034,765
73	Health	Central Florida Behavioral Health Network Inc	\$5,906,059
74	Education	Hillsborough County School Readiness Coalition Inc	\$5,871,083
75	Education	American College of Physician Executives Inc	\$5,207,412
76	Public and Societal	Tampa Bay Workforce Alliance Inc	\$5,079,270
77	Public and Societal	Tampa Historic Streetcar Inc	\$4,550,543
78	Human Services	Phoenix Programs of Florida Inc	\$4,543,249
79	Other	Love A Child Inc	\$4,410,798
80	Animal Related	Florida Aquarium Inc	\$4,348,225
81	Animal Related	Humane Society of Tampa Inc	\$4,329,247
82	Human Services	The Spring of Tampa Bay Inc	\$4,320,477
83	Human Services	The Centre for Women Inc	\$3,924,691
84	Health	Healthy Start Coalition of Hillsborough County Inc	\$3,548,405
85	Other	Sun Dome Inc	\$3,402,884
86	Human Services	Feeding America Tampa Bay Inc	\$2,313,831
87	Human Services	West Central Florida Area Agency on Aging Inc	\$2,299,221
88	Human Services	Human Development Center Inc	\$2,190,279
89	Public and Societal	Bay Area Legal Services Inc	\$1,904,849
90	Human Services	Cornerstone Family Ministries Inc	\$1,805,671
91	Human Services	Macdonald Training Center Inc	\$1,660,433
92	Other	Watoto Child Care Ministry Inc	\$1,531,678
93	Human Services	Genesis Financial Management Inc	\$1,105,237
94	Education	Advantage Academy of Hillsborough Inc	\$1,076,924
95	Human Services	Success 4 Kids & Families	\$1,076,673
96	Public and Societal	Outback Steakhouse Pro-Am Foundation Inc	\$1,030,877
97	Human Services	United Cerebral Palsy of Tampa Bay Inc	\$891,334
98	Education	Charter School of Tampa Bay Academy Inc	\$321,376
99	Health	Lifelink Healthcare Institute Inc	\$291,776
100	Human Services	Tampa Bay Harvest Inc	\$85,756

4.3 | Hillsborough County: Employment of Top 100 Nonprofit Organizations by Revenue

#	Category	Name	Total Employees
1	Health	Florida Health Sciences Center Inc	6,873
2	Health	University Community Hospital Inc	3,683
3	Health	H Lee Moffitt Cancer Center and Research Institute Hospital Inc	2,947
4	Human Services	Tampa Metropolitan Area YMCA Inc	2385
5	Education	University of Tampa	2,253
6	Human Services	Senior Care Group Inc	2,190
7	Education	Amikids Inc Group Return	1,781
8	Education	University of South Florida Medical Services Support Corporation	954
9	Health	H Lee Moffitt Cancer Center and Res Earch Institute Inc	947
10	Health	South Florida Baptist Hospital Inc	868
11	Human Services	Lifepath Hospice Inc	844
12	Arts	Tampa Bay Performing Arts Center	827
13	Human Services	Florida Living Options Inc	823
14	Human Services	Lutheran Services Florida Inc Karolia J Reagan	712
15	Health	Mental Health Care Inc	705
16	Health	The Shriners Hospital for Children	631
17	Human Services	John Knox Village of Tampa Bay Inc	591
18	Health	American Cancer Society Inc Florida Division Inc	578
19	Animal Related	Lowry Park Zoological Society of Tampa Inc	547
20	Other	Lifelink Foundation Inc	545
21	Human Services	Agency for Community Treatment Services Inc	495
22	Other	Florida Strawberry Festival Inc	490
23	Human Services	Good Shepherd Hospice Inc	411
24	Other	Sun Dome Inc	407
25	Education	Florida College	375
26	Health	H Lee Moffitt Cancer Ctr & Res Inst Life Time Cancer Scrn Ctr Inc	334
27	Health	Northside Mental Health Center Inc	316
28	Health	University Medical Service Association Inc	316
29	Human Services	Chapters Health System Inc	303
30	Health	Suncoast Community Health Centers Inc	290
31	Animal Related	Florida Aquarium Inc	288
32	Health	Childrens Home Inc	277
33	Human Services	The Crisis Center of Tampa Bay Inc	269
34	Health	Drug Abuse Comprehensive Coordinating Office Inc	267
35	Arts	Museum of Science and Industry Inc	257
36	Human Services	Tampa Family Health Centers Inc	250
37	Human Services	Hillsborough Association for Retarded Citizens Inc	222
38	Human Services	Girl Scouts of West Central Florida Inc	206
39	Education	Carrollwood Day School Education Inc	203
40	Public and Societal	Tampa Jcc-Federation Inc	195
41	Health	St Josephs Health Care Center Inc	194
42	Human Services	Canterbury Towers Inc	189
43	Human Services	Boys and Girls Clubs of Tampa Bay Inc	187
44	Education	Charter School of Tampa Bay Academy Inc	171
45	Human Services	Macdonald Training Center Inc	154
46	Human Services	United Cerebral Palsy of Tampa Bay Inc	151
47	Education	Tampa School Development Corporation	143
48	Education	The Pepin Academies Inc	135
49	Education	Tampa Preparatory School Inc	127
50	Human Services	St Josephs Enterprises Inc	127
51	Human Services	Metropolitan Ministries Inc	110
52	Human Services	The Spring of Tampa Bay Inc	105

53	Human Services	Phoenix Programs of Florida Inc	96
54	Human Services	Cornerstone Family Ministries Inc	93
55	Health	Jaeb Center for Health Research Inc	86
56	Health	Lifelink Healthcare Institute Inc	82
57	Human Services	The Centre for Women Inc	75
58	Other	Central Florida Lions Eye and Tissue Bank Inc	71
59	Animal Related	Humane Society of Tampa Inc	65
60	Human Services	Genesis Financial Management Inc	65
61	Other	Florida West Coast Public Broadcasting Inc	62
62	Education	Learning Gate Community School	61
63	Public and Societal	United Way of Tampa Bay Inc	60
64	Education	Advantage Academy of Hillsborough Inc	59
65	Education	Aacsb International the Association To Advance Collegiate Schools of	54
66	Public and Societal	University Area Community Development Corporation Inc	45
67	Education	Florida School Choice Fund Inc	38
68	Human Services	Insurance Institute for Business & Home Safety Ibhs	35
69	Human Services	Success 4 Kids & Families	34
70	Health	Healthy Start Coalition of Hillsborough County Inc	34
71	Human Services	Feeding America Tampa Bay Inc	34
72	Health	Franciscan Properties Inc	33
73	Other	Love A Child Inc	33
74	Education	Hillsborough Education Foundation Inc	30
75	Health	H Lee Moffitt Cancer Center and Research Institute Foundation Inc	28
76	Education	American College of Physician Executives Inc	27
77	Health	Central Florida Behavioral Health Network Inc	26
78	Other	Watoto Child Care Ministry Inc	21
79	Arts	Tampa Bay History Center Inc	20
80	Other	Tampa Bay Bowl Association Inc	14
81	Public and Societal	Special Operations Warrior Foundation	12
82	Public and Societal	Outback Steakhouse Pro-Am Foundation Inc	4
83	Human Services	Tampa-Orlando-Pinellas Jewish Foundation Inc Attn Bruce Shanker	2
84	Education	Back To Basics Charter School Foundation Inc Terrace Community School	0
85	Education	Hillsborough Community College Foundation Inc	0
86	Public and Societal	Tampa Historic Streetcar Inc	0
87	Human Services	Human Development Center Inc	0
88	Human Services	Tampa Bay Harvest Inc	0
89	Education	Independent Day School of Tampa Inc	0
90	Public and Societal	Bay Area Legal Services Inc	0
91	Human Services	West Central Florida Area Agency on Aging Inc	0
92	Health	Usf Health Professions Conferencing Corporation	0
93	Human Services	Community Foundation of Tampa Bay Inc	0
94	Public and Societal	Tampa Bay Workforce Alliance Inc	0
95	Education	University of South Florida Research Foundation Inc	0
96	Education	Usf Financing Corporation	0
97	Education	University of South Florida Foundation Inc Sam & Martha Gibbons Alumni Center	0
98	Human Services	Hillsborough Kids Inc	0
99	Education	Hillsborough County School Readiness Coalition Inc	0
100	Human Services	Ncf Charitable Trust	0

Note: Organizations with 0 employees did not disclose # of employees on their recent Form 990.

4.4 | Pinellas County: Top 100 Nonprofit Organizations by Revenue

#	Category	Name	Revenue
1	Health	St Josephs Hospital Inc	\$719,620,165
2	Health	Morton Plant Hospital Association Inc	\$517,817,883
3	Health	Trustees of Mease Hospital Inc	\$336,215,408
4	Health	All Childrens Hospital Inc	\$313,176,337
5	Health	Bayfront Medical Center Inc	\$294,033,113
6	Health	St Anthonys Hospital Inc	\$181,538,048
7	Health	Baycare Health Systems Inc	\$178,606,581
8	Health	Florida Blood Services Inc	\$129,044,918
9	Human Services	Hospice of the Florida Suncoast Inc	\$126,818,151
10	Health	Baycare Home Care Inc	\$112,054,046
11	Education	Eckerd Youth Alternatives Inc	\$100,720,455
12	Education	Eckerd College	\$95,900,885
13	Health	Tarpon Springs Hospital Foundation Inc Helen Ellis Hospital	\$72,387,901
14	Health	Morton Plant Mease Health Care Inc	\$66,305,268
15	Human Services	Coordinated Child Care of Pinellas Inc	\$62,014,549
16	Health	Camelot Community Care Inc	\$49,827,680
17	Health	Morton Plant Mease Primary Care Inc	\$49,584,288
18	Human Services	Goodwill Industries-Suncoast Inc	\$45,717,678
19	Education	Compass Rose Foundation Inc Southwest Florida College	\$38,821,281
20	Health	Morton Plant Mease Health Services Inc	\$32,145,124
21	Human Services	Gulf Coast Jewish Family and Community Services Inc	\$30,468,082
22	Human Services	Operation Par Inc	\$27,592,175
23	Human Services	Neighborly Care Network Inc	\$24,652,576
24	Other	Young Mens Christian Association of the Suncoast Inc	\$22,285,251
25	Human Services	Bon Secours Maria Manor Nursing Care Center Inc	\$22,163,148
26	Other	Raymond James Charitable Endowment Fund	\$21,874,851
27	Health	Pediatric Physicians Services Inc	\$21,073,722
28	Human Services	Worknet Pinellas Inc	\$19,328,844
29	Health	Suncoast Center Inc	\$18,505,182
30	Human Services	Menorah Manor Inc	\$18,147,986
31	Arts	Ruth Eckerd Hall Inc	\$17,986,515
32	Human Services	Mease Manor Inc	\$17,574,809
33	Human Services	St Mark Village Inc	\$17,440,857
34	Human Services	Area Agency on Aging of Pasco-Pinellas Inc	\$17,095,537
35	Health	Boley Centers Inc	\$17,041,024
36	Health	Personal Enrichment Through Mental Health Services Inc	\$16,893,343
37	Public and Societal	Pinellas Opportunity Council Inc	\$16,664,637
38	Health	St Anthonys Professional Building Inc	\$16,662,582
39	Other	National Forensic Science Technology Center Inc	\$14,089,623
40	Education	Head Start Child Development and Family Serivces Inc	\$14,086,027
41	Health	Pinellas Association for Retarded Children Inc	\$13,772,161
42	Education	Clearwater Christian College Clearwater Christian College	\$13,075,263
43	Health	Bayfront Health System Inc	\$12,851,223
44	Health	Directions for Mental Health Inc	\$11,829,161
45	Health	Community Health Center of Pinellas Inc	\$11,693,514
46	Health	West Coast Neonatology Inc	\$11,561,401
47	Human Services	Upper Pinellas Association for Retarded Citizens Inc	\$11,196,923
48	Human Services	Hospice Foundation of the Florida Suncoast Inc	\$11,054,519
49	Human Services	R Club Child Care Inc	\$10,591,391

50	Human Services	Baptist Estates of Florida Inc	\$10,575,890
51	Arts	Salvador Dali Museum Inc	\$10,531,864
52	Health	Morton Plant Mease Health Care Foundation Inc	\$10,386,009
53	Other	Pinellas County Urban League Inc	\$10,148,795
54	Health	Baycare Alliant Hospital Inc	\$10,014,696
55	Human Services	Catholic Charities Diocese of St Petersburg Inc	\$8,494,187
56	Human Services	Pinellas Community Foundation Lynch Rae	\$8,452,787
57	Arts	Florida Orchestra Inc	\$8,330,582
58	Education	Admiral Farragut Academy Inc	\$8,147,678
59	Other	Christian Television Corporation Inc	\$7,788,709
60	Human Services	National Foundation for Debt Management Inc	\$7,681,467
61	Human Services	Intervention Services Inc	\$7,630,993
62	Human Services	Family Resources Inc	\$7,599,766
63	Education	Canterbury School of Florida Inc	\$7,506,723
64	Other	Young Mens Christian Association of Greater St Petersburg Inc	\$7,463,294
65	Human Services	Abilities Inc of Florida	\$6,813,381
66	Human Services	Religious Community Services Inc	\$6,655,041
67	Education	Pinellas Public Library Cooperative Inc	\$6,285,862
68	Health	All Childrens Hospital Foundation Inc Attn Finance 9010	\$6,021,638
69	Education	Saint Pauls School Inc	\$5,727,504
70	Human Services	Tampa Bay Community Development Corporation	\$5,710,980
71	Human Services	Habitat for Humanity of Pinellas County Inc	\$5,629,362
72	Education	Pinellas County Education Foundation Inc	\$5,384,290
73	Human Services	Center for Special Needs Tr Administration Inc	\$5,070,903
74	Health	St Petersburg Free Clinic Inc	\$4,843,264
75	Human Services	Homeless Emergency Project Inc	\$4,739,623
76	Health	Behavioral Health Management Services Inc	\$4,607,134
77	Education	Keswick Christian School Inc	\$4,498,418
78	Animals Related	Clearwater Marine Aquarium Inc	\$4,344,500
79	Education	St Petersburg College Foundation Inc	\$4,221,273
80	Animals Related	Eagle Lake Foundation Inc Eagle Lake Rehab & Care Center	\$4,145,481
81	Human Services	Metropolitan Charities Inc	\$3,785,705
82	Human Services	Community Action Stops Abuse Inc C A S A	\$3,781,610
83	Human Services	Indian Rocks Assisted Living Inc	\$3,764,473
84	Human Services	Gulfcoast Legal Services Inc	\$3,727,993
85	Education	Palm Harbor Community Service Agency Inc	\$3,650,196
86	Health	Carlton Manor Inc	\$3,445,787
87	Animals Related	Society for the Prevention of Cruel Ty To Animals Tampa Bay Florida in	\$3,330,426
88	Arts	Museum of Fine Arts of St Petersburg Fla Inc	\$3,239,511
89	Health	Kids Home Care Inc	\$3,234,392
90	Health	Health Start Coalition of Pinellas Inc	\$3,232,267
91	Health	Community Health Centers Alliance Inc	\$3,231,164
92	Human Services	Christian Law Association	\$3,144,833
93	Human Services	Contemporary Housing Alternatives of Florida Inc	\$3,093,430
94	Other	Florida Public Broadcasting Service Inc	\$2,750,970
95	Other	Boys and Girls Clubs of the Suncoast Inc	\$2,680,210
96	Education	Pinellas Preparatory Academy Inc	\$2,635,667
97	Education	Lakeside Christian School Inc	\$2,587,312
98	Human Services	Village-Virgin Islands Partners in Recovery Inc	\$2,487,713
99	Human Services	Pinellas Crisis Pregnancy Center Inc	\$2,402,203
100	Human Services	Lutheran Residences Inc	\$2,378,612

4.5 | Pinellas County: Assets of Top 100 Nonprofit Organizations by Revenue

#	Category	Name	Total Assets
1	Health	Baycare Health Systems Inc	\$986,740,376
2	Health	All Childrens Hospital Inc	\$864,610,433
3	Health	St Josephs Hospital Inc	\$799,697,234
4	Health	Morton Plant Mease Health Care Inc	\$656,953,322
5	Health	Morton Plant Hospital Association Inc	\$588,002,971
6	Health	Trustees of Mease Hospital Inc	\$370,649,074
7	Health	Bayfront Medical Center Inc	\$195,400,273
8	Education	Eckerd College	\$151,400,193
9	Health	All Childrens Hospital Foundation Inc Attn Finance 9010	\$136,018,340
10	Health	Bayfront Health System Inc	\$121,981,639
11	Health	Florida Blood Services Inc	\$114,178,969
12	Health	St Anthonys Hospital Inc	\$110,530,700
13	Other	Raymond James Charitable Endowment Fund	\$108,800,310
14	Health	Morton Plant Mease Health Care Foundation Inc	\$95,898,457
15	Health	Baycare Home Care Inc	\$69,377,536
16	Human Services	Goodwill Industries-Suncoast Inc	\$64,895,071
17	Human Services	Pinellas Community Foundation Lynch Rae	\$64,215,252
18	Human Services	Hospice of the Florida Suncoast Inc	\$62,891,681
19	Education	Eckerd Youth Alternatives Inc	\$56,783,002
20	Human Services	Hospice Foundation of the Florida Suncoast Inc	\$49,863,052
21	Arts	Museum of Fine Arts of St Petersburg Fla Inc	\$46,911,783
22	Health	St Anthonys Professional Building Inc	\$45,336,452
23	Education	St Petersburg College Foundation Inc	\$44,026,586
24	Human Services	Contemporary Housing Alternatives of Florida Inc	\$43,940,226
25	Education	Compass Rose Foundation Inc Southwest Florida College	\$43,189,251
26	Health	Tarpon Springs Hospital Foundation Inc Helen Ellis Hospital	\$41,082,541
27	Other	Young Mens Christian Association of the Suncoast Inc	\$38,864,492
28	Health	Morton Plant Mease Health Services Inc	\$37,492,265
29	Arts	Salvador Dali Museum Inc	\$35,515,306
30	Other	Christian Television Corporation Inc	\$33,628,320
31	Education	Pinellas County Education Foundation Inc	\$32,987,562
32	Arts	Ruth Eckerd Hall Inc	\$32,907,475
33	Human Services	Baptist Estates of Florida Inc	\$27,018,396
34	Human Services	Operation Par Inc	\$26,823,745
35	Human Services	Neighborly Care Network Inc	\$21,043,934
36	Human Services	St Mark Village Inc	\$21,006,413
37	Human Services	Mease Manor Inc	\$18,931,226
38	Human Services	Menorah Manor Inc	\$18,589,999
39	Human Services	Upper Pinellas Association for Retarded Citizens Inc	\$18,107,406
40	Other	Young Mens Christian Association of Greater St Petersburg Inc	\$17,316,773
41	Human Services	Gulf Coast Jewish Family and Community Services Inc	\$16,510,132
42	Health	Boley Centers Inc	\$15,583,036
43	Education	Clearwater Christian College Clearwater Christian College	\$15,037,819
44	Human Services	Coordinated Child Care of Pinellas Inc	\$13,467,257
45	Human Services	Homeless Emergency Project Inc	\$13,448,582
46	Education	Canterbury School of Florida Inc	\$12,986,895
47	Human Services	R Club Child Care Inc	\$12,569,174
48	Education	Saint Pauls School Inc	\$12,270,679
49	Human Services	Tampa Bay Community Development Corporation	\$10,945,935

50	Human Services	Indian Rocks Assisted Living Inc	\$10,119,326
51	Health	Suncoast Center Inc	\$9,745,097
52	Health	Personal Enrichment Through Mental Health Services Inc	\$9,112,912
53	Arts	Florida Orchestra Inc	\$8,960,103
54	Other	National Forensic Science Technology Center Inc	\$8,921,000
55	Human Services	Family Resources Inc	\$8,875,315
56	Health	Community Health Center of Pinellas Inc	\$8,796,102
57	Human Services	Bon Secours Maria Manor Nursing Care Center Inc	\$8,608,335
58	Education	Head Start Child Development and Family Services Inc	\$8,087,676
59	Health	Pediatric Physicians Services Inc	\$8,042,165
60	Animals Related	Clearwater Marine Aquarium Inc	\$7,851,498
61	Health	Morton Plant Mease Primary Care Inc	\$7,743,800
62	Animals Related	Society for the Prevention of Cruel Ty To Animals Tampa Bay Florida in	\$7,682,774
63	Human Services	Lutheran Residences Inc	\$7,526,584
64	Health	Camelot Community Care Inc	\$7,362,902
65	Education	Admiral Farragut Academy Inc	\$7,275,276
66	Education	Keswick Christian School Inc	\$7,244,607
67	Education	Palm Harbor Community Service Agency Inc	\$7,073,435
68	Health	Pinellas Association for Retarded Children Inc	\$6,445,583
69	Human Services	Habitat for Humanity of Pinellas County Inc	\$6,433,591
70	Human Services	Religious Community Services Inc	\$6,227,041
71	Human Services	Abilities Inc of Florida	\$5,399,383
72	Education	Pinellas Public Library Cooperative Inc	\$5,070,633
73	Human Services	Community Action Stops Abuse Inc C A S A	\$4,912,675
74	Human Services	Center for Special Needs Tr Administration Inc	\$4,592,649
75	Health	Directions for Mental Health Inc	\$4,518,047
76	Human Services	Worknet Pinellas Inc	\$4,326,400
77	Human Services	Gulfcoast Legal Services Inc	\$4,217,136
78	Health	West Coast Neonatology Inc	\$4,110,655
79	Human Services	Pinellas Crisis Pregnancy Center Inc	\$4,037,194
80	Human Services	Catholic Charities Diocese of St Petersburg Inc	\$3,526,411
81	Health	Community Health Centers Alliance Inc	\$3,176,032
82	Other	Boys and Girls Clubs of the Suncoast Inc	\$2,502,744
83	Health	St Petersburg Free Clinic Inc	\$2,395,068
84	Human Services	National Foundation for Debt Management Inc	\$2,369,729
85	Health	Baycare Alliant Hospital Inc	\$2,323,904
86	Other	Pinellas County Urban League Inc	\$2,110,939
87	Health	Carlton Manor Inc	\$1,953,724
88	Health	Health Start Coalition of Pinellas Inc	\$1,792,873
89	Human Services	Area Agency on Aging of Pasco-Pinellas Inc	\$1,753,922
90	Health	Kids Home Care Inc	\$1,521,365
91	Human Services	Metropolitan Charities Inc	\$1,240,555
92	Human Services	Intervention Services Inc	\$1,232,630
93	Human Services	Village-Virgin Islands Partners in Recovery Inc	\$1,049,107
94	Health	Behavioral Health Management Services Inc	\$949,483
95	Animals Related	Eagle Lake Foundation Inc Eagle Lake Rehab & Care Center	\$832,607
96	Education	Pinellas Preparatory Academy Inc	\$728,593
97	Other	Florida Public Broadcasting Service Inc	\$678,245
98	Education	Lakeside Christian School Inc	\$568,277
99	Human Services	Christian Law Association	\$524,614
100	Public and Societal	Pinellas Opportunity Council Inc	\$483,338

4.6 | Pinellas County: Employment of Top 100 Nonprofit Organizations by Revenue

#	Category	Name	Total Employees
1	Health	St Josephs Hospital Inc	5,479
2	Health	Morton Plant Hospital Association Inc	3,775
3	Health	Bayfront Medical Center Inc	2,684
4	Health	Trustees of Mease Hospital Inc	2,510
5	Human Services	Hospice of the Florida Suncoast Inc	2,377
6	Health	Baycare Health Systems Inc	2,085
7	Human Services	Goodwill Industries-Suncoast Inc	1,963
8	Education	Eckerd Youth Alternatives Inc	1,773
9	Health	St Anthony's Hospital Inc	1,677
10	Other	Young Mens Christian Association of the Suncoast Inc	1,642
11	Education	Eckerd College	1,632
12	Health	Baycare Home Care Inc	1,247
13	Health	Florida Blood Services Inc	1,205
14	Health	Morton Plant Mease Health Care Inc	854
15	Human Services	Gulf Coast Jewish Family and Community Services Inc	837
16	Health	Tarpon Springs Hospital Foundation Inc Helen Ellis Hospital	809
17	Health	Camelot Community Care Inc	733
18	Human Services	Operation Par Inc	673
19	Education	Clearwater Christian College Clearwater Christian College	568
20	Health	Morton Plant Mease Primary Care Inc	554
21	Human Services	Upper Pinellas Association for Retarded Citizens Inc	518
22	Health	Pinellas Association for Retarded Children Inc	493
23	Other	Young Mens Christian Association of Greater St Petersburg Inc	473
24	Health	Boley Centers Inc	411
25	Health	Suncoast Center Inc	410
26	Health	Personal Enrichment Through Mental Health Services Inc	385
27	Education	Head Start Child Development and Family Services Inc	377
28	Human Services	Menorah Manor Inc	355
29	Human Services	St Mark Village Inc	350
30	Human Services	Mease Manor Inc	325
31	Health	Directions for Mental Health Inc	313
32	Human Services	Baptist Estates of Florida Inc	310
33	Human Services	Bon Secours Maria Manor Nursing Care Center Inc	304
34	Human Services	Family Resources Inc	288
35	Health	Morton Plant Mease Health Services Inc	268
36	Arts	Ruth Eckerd Hall Inc	266
37	Arts	Florida Orchestra Inc	232
38	Human Services	Intervention Services Inc	221
39	Human Services	Neighborly Care Network Inc	214
40	Health	St Anthony's Professional Building Inc	192
41	Human Services	Abilities Inc of Florida	175
42	Human Services	Coordinated Child Care of Pinellas Inc	166
43	Human Services	Catholic Charities Diocese of St Petersburg Inc	154
44	Animals Related	Eagle Lake Foundation Inc Eagle Lake Rehab & Care Center	152
45	Human Services	Worknet Pinellas Inc	146
46	Education	Canterbury School of Florida Inc	138
47	Animals Related	Society for the Prevention of Cruel Ty To Animals Tampa Bay Florida in	137
48	Education	Admiral Farragut Academy Inc	129
49	Education	Saint Pauls School Inc	121

50	Human Services	Indian Rocks Assisted Living Inc	119
51	Education	Keswick Christian School Inc	117
52	Health	Baycare Alliant Hospital Inc	115
53	Health	Community Health Center of Pinellas Inc	110
54	Human Services	Metropolitan Charities Inc	104
55	Human Services	Religious Community Services Inc	93
56	Health	Behavioral Health Management Services Inc	88
57	Other	Boys and Girls Clubs of the Suncoast Inc	83
58	Other	Christian Television Corporation Inc	72
59	Human Services	Community Action Stops Abuse Inc C A S A	70
60	Education	Lakeside Christian School Inc	69
61	Health	Carlton Manor Inc	68
62	Education	Palm Harbor Community Service Agency Inc	64
63	Arts	Salvador Dali Museum Inc	60
64	Human Services	Homeless Emergency Project Inc	57
65	Human Services	Village-Virgin Islands Partners in Recovery Inc	55
66	Animals Related	Clearwater Marine Aquarium Inc	50
67	Human Services	Center for Special Needs Tr Administration Inc	49
68	Other	National Forensic Science Technology Center Inc	49
69	Human Services	Gulfcoast Legal Services Inc	45
70	Human Services	Area Agency on Aging of Pasco-Pinellas Inc	42
71	Human Services	National Foundation for Debt Management Inc	40
72	Human Services	Pinellas Crisis Pregnancy Center Inc	33
73	Arts	Museum of Fine Arts of St Petersburg Fla Inc	32
74	Education	Pinellas County Education Foundation Inc	28
75	Other	Pinellas County Urban League Inc	28
76	Health	Bayfront Health System Inc	27
77	Health	St Petersburg Free Clinic Inc	27
78	Human Services	Habitat for Humanity of Pinellas County Inc	27
79	Public and Societal	Pinellas Opportunity Council Inc	27
80	Human Services	Contemporary Housing Alternatives of Florida Inc	20
81	Education	Pinellas Public Library Cooperative Inc	11
82	Human Services	Tampa Bay Community Development Corporation	9
83	Health	Health Start Coalition of Pinellas Inc	8
84	Education	St Petersburg College Foundation Inc	6
85	Other	Florida Public Broadcasting Service Inc	5
86	Human Services	Pinellas Community Foundation Lynch Rae	3
87	Education	Compass Rose Foundation Inc Southwest Florida College	0
88	Education	Pinellas Preparatory Academy Inc	0
89	Health	All Childrens Hospital Inc	0
90	Health	Pediatric Physicians Services Inc	0
91	Health	West Coast Neonatology Inc	0
92	Health	Morton Plant Mease Health Care Foundation Inc	0
93	Health	All Childrens Hospital Foundation Inc Attn Finance 9010	0
94	Health	Kids Home Care Inc	0
95	Health	Community Health Centers Alliance Inc	0
96	Human Services	Hospice Foundation of the Florida Suncoast Inc	0
97	Human Services	R Club Child Care Inc	0
98	Human Services	Christian Law Association	0
99	Human Services	Lutheran Residences Inc	0
100	Other	Raymond James Charitable Endowment Fund	0

Note: Organizations with 0 employees did not disclose # of employees on their recent Form 990.

About Nonprofit Leadership Center of Tampa Bay

The Nonprofit Leadership Center of Tampa Bay is the provider of nonprofit education and resources in the Tampa Bay area. We teach approximately 100 programs to 1,300 students representing over 260 nonprofit organizations every year. The result of our work is more efficient, effective and sustainable nonprofit organizations.

The Nonprofit Leadership Center of Tampa Bay was founded in 1996 by a group of local funders who felt that the nonprofits in our community needed support and increased skills in order to manage their organizations successfully.

Mission

We teach nonprofits the skills to run their businesses through affordable training, coaching and online resources.

Vision

To become the recognized leader in nonprofit education.

Guiding Principle

We live by the education we deliver.

For more information about the Nonprofit Leadership Center of Tampa Bay or the 2011 Economic Impact Study please contact CEO Grace Armstrong at garmstrong@nonprofitleadershipcenter.com or (813) 287-8779.



Nonprofit Leadership Center of Tampa Bay
1401 N. Westshore Blvd., Suite 101 | Tampa, FL 33607 | (813) 287-8779
info@nonprofitleadershipcenter.com | www.nonprofitleadershipcenter.com